








2019 GPSC Sailing Instructions

58th Annual Tuesday Night Sundown Series

- 1.0 Section 1 instructions are required by the U.S. Coast Guard
- 1.1 All Competitors shall not interfere with commercial shipping transiting the entire racing area at any time.
 - 1.2 When code flag “F” is displayed by the race committee, on shore or boat, the shipping channel downstream of the channel mark “G1” shall become a restricted area. Sec 1.3 then applies.
 - 1.3 Any boat inside the restricted area when code flag “F” is displayed shall exit the restricted area while staying in conformance with the requirements of Sec 1.1. Boats shall not enter the restricted area except to expeditiously cross the channel while staying in conformance with the requirements of Sec 1.1.
 - 1.4 Any boat not complying with Secs 1.1, 1.2 or 1.3 may be subject to protest by the race committee and may be reported to the Coast Guard.
 - 1.5 Infraction of Secs. 1.1, 1.2 or 1.3 is not subject to protest by another boat (this changes RRS 60.1)
- 2.0 **RULES**
- 2.1 The races will be governed by rules as defined in the current “Racing Rules of Sailing” (RRS) or as modified by the Sailing Instructions (SI).
 - 2.2 When there is conflict, the “Sailing Instructions” (SI) shall prevail over the Notice Of Race (this changes RRS 63.7)
- 3.0 **SIGNALS MADE ASHORE BY RACE COMMITTEE**
- 3.1 Signals made ashore will be displayed at the race committee end of the starting line located at the East Corner of Grosse Pointe Park Windmill Pointe Marina

3.2 Shipping Channel Off Limits	“F” Flag (Red Diamond on White Field) SI Section 1 is in effect while flag is up.	SIREN (Both when	
Shortened Course	“S” Flag (Blue Rectangle on White Field) will be displayed before the Preparatory signal of any class that it applies (This changes RRS 32)	hoisted and lowered.)	
Recall Signal	“X” Flag (Blue Cross on White Field) for individual recall.	2 Long	
Postponement Signal	“AP” Pennant (3 Red, 2 White Vertical Bars on Triangle Pennant) Races not started are postponed. The warning will be made 1 minute after removal of “AP”	Sounds	
Abandonment Signal	“N” Flag (Blue and White Checkerboard Pattern) All races are abandoned, return to the starting area. The warning signal will be made 1 minute after removal of “N”	1 Sound	
	“N over A” Flags (Vertical Blue and White Swallowtail) All races are abandoned, no more racing today.	3 Sounds	
		3 Sounds	

4.0 FORMAT OF RACING

4.1 The Sundown Series is comprised of TWO series of SIX races each. Races are run on Tuesday evenings. The first warning signal will be at or about 1855 hours unless delayed.

Spring Series: May 21, 28 June 4, 11, 18, 25 Summer Series:
July 1, 9 August 6, 13, 20, 27

4.2	SEQUENCE	Class	Standard Course	Shortened Course
	START 1	PHRF (SYM) A (≤ 114)	1	2
	START 2	Cruising (ASYM) Class	1	2
	START 3	JAM	2	3
	START 4	PHRF (SYM) B (117-177)	2	3
	START 5	CAL 25	2	3
	START 6	PHRF (SYM) C (≥ 180)	2	3
	START 7	CRESCENT	2	3

PHRF Handicapping is applied in scoring ‘Time on Distance’ calculations

4.3 Splits shall be posted on the GPSC racing bulletin board, with the race committee dockside, and on the GPSC Website prior to the start of Race 1.

5.0 RACING AREA

5.1 Addendum A ‘2019 GPSC Sundown Series’, chart shows the general location, approximate range, approximate bearings in one direction and the approximate Latitude and Longitude of each mark of the course. The area is in the South Western portion of Lake St. Clair.

5.2 Race Course Descriptions

MARKS TO STARBOARD (Green flag or shape)	MARKS TO PORT (Red flag or shape)
COURSE 1 Distance = 6.7 NM Start – C – B – A – C – B – Finish	COURSE 1 Distance = 6.7 NM Start – B – C – A – B – C – Finish
COURSE 2 Distance = 4.6 NM Start – C – B – Finish	COURSE 2 Distance = 4.6 NM Start – B – C – Finish
COURSE 3 Distance = 3.8 NM Start – C – A – Finish	COURSE 3 Distance = 3.8 NM Start – B – A – Finish

5.3 Buoy Descriptions and Approximate Locations

MARK A Lake St. Clair Navigation Red Buoy 2	MARK B WYC Buoy B
Approximate Position 42°21.904’N 082°53.872’W	Approximate Position 42°21.643’N 082°52.892’W
MARK C GPSC Orange Floating Buoy	
Approximate Position 42°22.431’N 082°53.615’W	
* Note: Latitude and Longitude are in degrees and decimal minutes, not degrees, minutes and seconds.	

5.4 SHORTENED COURSE AFTER THE START: If Code Flag “J” is displayed from a Race Committee boat near a rounding mark then boats shall round the course mark near the Race Committee boat and sail direct to the finish line. Flag “J” consists of three horizontal bands, colored blue-white-blue. The Race Committee vessel displaying the visual signal will attempt by the use of a sound signal to alert the boats of the shortened course as the boats approach. This changes RRS 32 as it pertains to shortening the course.

6.0 THE START

<p>6.1 <u>When it is 1 minute to 1st class: Warning (or a subsequent warning if a class starting sequence was stopped by the Race Committee), No flag raised. A few short horn sounds</u> 5 minutes to Start Warning Class flag <u>raised</u>, 1 sound 4 minutes to Start Preparatory “P” flag <u>raised</u>, 1 sound 1 minute to Start 1 Minute “P” flag <u>lowered</u>, 1 long sound Class Start Start Starting class flag lowered & 1 sound <div style="text-align: right;">next remaining class flag raised</div> The first warning signal will be at or about <u>1855 hours</u> unless committee delays start.</p>

6.2 NUMERAL PENNANTS corresponding to the start number will be used as CLASS FLAGS 6.3 Races will be started with the warning signal made 5 minutes before the starting signal.

6.4 Start times shall be taken from the visual signals; the absence or error of a sound signal shall be disregarded.

6.5 The starting line will be between the flagpole displaying the RC flag near the upstream corner of the Grosse Pointe Park marina seawall and a floating orange inflatable or ridged buoy near the channel.

7.0 THE FINISH

7.1 The finish line will be between the flagpole on the upstream corner of the Grosse Pointe Park marina seawall and an inflatable or rigid orange buoy near the channel. In darkness, all finishing boats must light their sail numbers for the final minute as they approach the finish line.

8.0 TIME LIMITS

8.1 The time limit for all classes to complete their course, as required by rule 28.1, is 2 hours. One boat in a class finishing within the time limit shall qualify the race for that class.

8.2 Boats failing to finish within 1 hour after the first boat in their class finishes, as required by rule 28.1, shall be scored 'Did Not Finish'(DNF). This changes rules 35, A4 and A5.

9.0 PROTESTS AND REQUESTS FOR REDRESS

9.1 Protest forms are available on line at www.gpsc.org or the U.S. Sailing website.

9.2 Protests and requests for redress or reopening shall be delivered to the dockside Race Committee staff, the Grosse Pointe Park Windmill Pointe guardhouse or emailed to gpsc.racechair@gmail.com within the appropriate time limit.

9.3 For each class the time limit for delivery of the protest form is 2 hours after finishing or the time limit has expired (reference RRS 61.3).

9.4 The time and place of protest hearings, if any, will be posted on www.gpsc.org. It is the intention of the race committee to post them within 48 hours of the completion of each race.

10.0 SCORING

10.1 Each series standing will be determined by the "QuickScore" Race Scoring Program utilizing its high point scoring method and calculations for race results and tie breaking. Awarded for each race:

STARTING and FINISHING:	1 Point
EACH BOAT DEFEATED:	1 Point
DSQ, DNF, OCS, BFD, UFD, DNE:	0 Points, but count as boats defeated for the purpose of scoring other boats in the race.

10.2 Points will be totaled separately for Spring and Summer Race Series.

10.3 There will be one throw-out race per race series unless two or more races are canceled by the race committee, in which case there will be no throw-out. Races canceled by the race committee will not count as a throw-out.

10.4 DSQ's cannot be thrown out.

10.5 The race with the lowest point score for the individual racer will be used as the throw out.

10.6 Races canceled for any reason will reduce the total number of series races by one for each cancellation.

10.7 Ties for awards will be resolved using "QuickScore" Race Scoring Program, high point system. This changes RRS A8.

10.8 There will be no retroactive scoring of unregistered boats. Boats not registered prior to the scoring of a race will not be scored in it.

10.9 First, Second, and Third place flags will be awarded in each class with at least five registered boats. First and Second place flags will be awarded in each class with four registered boats.

11.0 RETIRING FROM THE RACE

11.1 A boat that retires from a race shall notify the Race Committee as soon as possible. The race committee operates on Channel 68 and can be contacted on this channel when able to do so, pending performance of other tasks. Alternatively, please call the Race Chair at 757 289-6689. Boats failing to notify the Race Committee of their retirement may be penalized by

not permitting the race to be thrown out at the discretion of the Race Committee

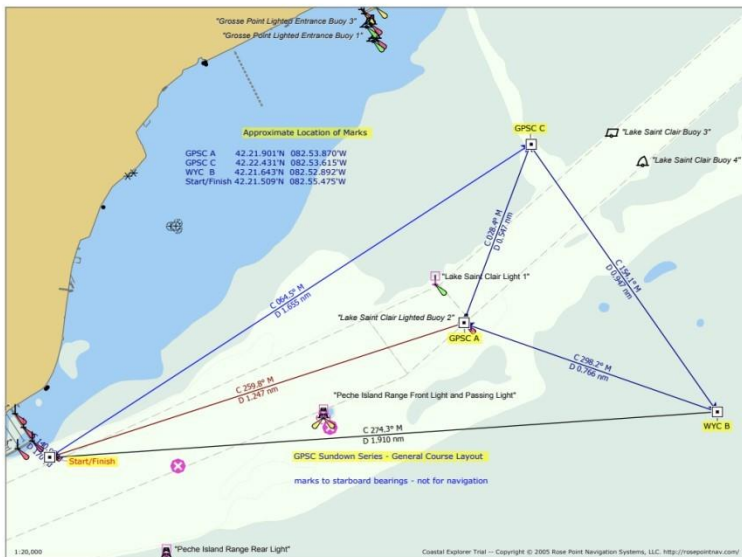
12.0 RADIO COMMUNICATION

12.1 The Race Committee communicates with the Mark Set and Patrol Boats on Channel 68. The start sequence countdown may be broadcast on this channel. GPSC Sundown Series SI 6.4 still applies in all cases.

13.0 CHANGES, ERRORS, OMISSIONS

13.1 Monitor www.gpsc.org Sundown Series race page in the race section of the website for changes to the Sailing Instructions (SI) to correct errors or omissions in the original SI document. Changes to class splits may occur prior to the first race but not thereafter. Report errors and omissions, or direct questions to gpsc.racechair@gmail.com.

14.0 WAIVER OF LIABILITY – Sailing is an activity that has an inherent risk of damage and injury. Competitors in this event are participating entirely at their own risk. See RRS 4, Decision to Race.



*** Larger course description available on the following page or as a separate file on www.gpsc.org.

